



Airless Spray Equipment

TACKLE ANY JOB WITH CONFIDENCE!



Featuring a full line of Airless Paint Sprayers, Heavy-Duty Pressure Washers, Texture Sprayers, and Accessories.

Power Application Equipment For The Painting Industry

Table of Contents

Page 1	Why Airless Spray - Selection Chart
Page 2	Zip Spray ESP, 1700, 2100 Plus
Page 3	Zip Spray 2300 Plus, 2700 Plus, 3100 Plus
Page 4	Zip Spray 3600 G Plus & Accessories
Page 5	Airless Accessories - Guns
Page 6	Airless Accessories - Pressure Rollers, Mini Poles
Page 7	Airless Accessories - Maxi Poles, Gun Filters, Repair Kits, AngleHead & Fittings
Page 8	Tip Selection Guide Reversible Tip
Page 9	Tip Selection Guide Standard Reversible Uni-Tip, Striping & Fine Finish
Page 10	Super Zip Tip Selection Guide
Page 11	Flat Tip Selection Guide
Page 12	Texture Application Guide
Page 13	Texture Intro - Zip-Tex 650
Page 14	Texture Zip-Tex 900, ASM Professional Contractor Hopper Gun
Page 15	Texture Hopper, Accessories & Replacement Parts
Page 16	Pressure Washers - Zip Clean 2525
Page 17	Pressure Washers - Zip Clean 2730, 3030 & Accessories
Page 18	Electric Airless Product Specifications & Comparison Guide
Page 19	Gas Engine Airless Product Specifications, Zip-Tex Units, Pressure Washers & Comparison Guide
Page 20	Fluids
Page 21	Merchandising Displays



ASM MAKES PROJECTS A ZIP!

For use with a variety of coatings including stains, enamels, interior/exterior latex and oil-based paints.

EASIER! Professional results made easy!

Uniform and professional results are now a zip! ASM's Zip-Spray Airless Sprayers & Texture Units produce a high-quality finish on every job they tackle!

FASTER! Finish large projects fast!

ASM's Zip-Spray Airless Sprayers are up to 10X faster than brushing and 4 times faster than traditional rolling. Save time and increase your productivity.

AFFORDABLE! Save Money!

ASM's Zip-Spray Airless Sprayers & Texture Units pay for themselves in just over one project.

- Enjoy increased productivity and finish the job fast
- Contractors save money by reducing both on-the-job time and down time
- Save money on paint with professional coverage and a smooth finish every time

Why Airless Spray?

Airless spray is 10 times faster than brushing, and 4 times faster than traditional rolling. Airless spray provides even material coverage on all types of surfaces. You can spray most common coatings, including stains, latex, and oil-based paints. And best of all, airless spray saves you money!

Zip-Spray™ airless spray systems are designed to save time by increasing your productivity and reducing downtime. They are durable, perfect for rugged job site conditions. They are easy to operate and transport for convenience as you work. And you'll find that Zip-Spray airless sprayers still offer the innovation and value you've come to expect from ASM.

Airless Equipment Selection Chart

	Highest Operating Pressure	Delivery Rating	Max Tip Size Supported	Recommended Annual Use	Typical Coatings	Ideal Users
Zip-Spray ESP	2800 psi (19.3 MPa, 193 bar)	.24 gpm (.91 lpm)	.015 in (.381 mm)	Roll: 1000 gal (3785 L) Spray: 175 gal (662 L)	Varnish, Enamels, Primers, Interior/Exterior Latex	Light-Duty
Zip-Spray 1700	3000 psi (20.7 MPa, 207 bar)	.31 gpm (1.17 lpm)	.017 in (.432 mm)	Roll: 1500 gal (5678 L) Spray: 300 gal (1135 L)	Varnish, Enamels, Primers, Interior/Exterior Latex	Medium-Duty
Zip-Spray 2100 PLUS	3300 psi (20.7 MPa, 207 bar)	.47 gpm (1.8 lpm)	.021 in (.483 mm)	1000 gal (3785 L)	Varnish, Enamels, Primers, Interior/Exterior Latex	Heavy-Duty
Zip-Spray 2300 PLUS	3300 psi (22.7 MPa, 227 bar)	.54 gpm (2.0 lpm)	.023 in (.584 mm)	1250 gal (4732 L)	Varnish, Enamels, Primers, Interior/Exterior Latex & Heavier Bodied Latex	Heavy-Duty
Zip-Spray 2700 PLUS	3300 psi (22.7 MPa, 227 bar)	.86 gpm (3.25 lpm)	.027 in (.686 mm)	1500 gal (5678 L)	Varnish, Enamels, Primers, Interior/Exterior Latex & Heavier Bodied Latex	Pro-Duty
Zip-Spray 3100 PLUS	3300 psi (22.7 MPa, 227 bar)	1.1 gpm (4.2 lpm)	.031 in (.787 mm)	1500 gal (5678 L)	Varnish, Enamels, Primers, Interior/Exterior Latex & Heavier Bodied Latex	Pro-Duty
Zip-Spray 3600 G PLUS	3300 psi (22.7 MPa, 227 bar)	1.25 gpm (4.7 lpm)	.036 in (.912 mm)	1500 gal (5678 L)	Block Fillers & Elastomers, Enamels, Primers, Interior/Exterior Latex & Heavier Bodied Latex	Pro-Duty

Zip-Spray ESP

Light-Duty Electric Airless Sprayer

The Zip-Spray ESP offers convenience, durability, and value for tradesmen with occasional painting needs, homeowners, and do-it-yourselfers. Ideal for use with paint spraying and paint pressure rolling applications (pressure roller kit sold separately).

Zip-Flush™ Cleaning

- Connect to a garden hose and clean the pump, hoses, and gun in minutes!

Lightweight Design

- Portable and easy to store. Weighs only 13 lbs (5.9 kg)
- 4-legged stand is durable and stable

Demand Delivery System

- Pump runs only when gun trigger is activated, reducing sprayer wear
- Draws from a 1 or 5 gallon container

Simple Piston Design

- For reliable performance and long life
- Max tip supported .015

Includes:

- ASM 200 Contractor Spray Gun with 4-Finger Trigger
- 515 Uni-Tip with Uni-Tip Hand-Tight Base
- 1/4 in x 25 ft (6.3 mm x 7.6 m), 3300 psi (22.7 MPa, 227 bar) airless paint hose
- Pump Life Protectant Fluid



Part# 248772
UPC# 769946084481

Zip-Spray 1700

Medium-Duty Electric Airless Sprayer

The Zip-Spray 1700 is ideal for moderate spraying needs, including property maintenance, remodeling, and light commercial projects.

Zip-Flush™ Cleaning

- Connect to a garden hose and clean the pump, hoses, and gun in minutes!
- Pump lower is modular design for easy repair and maintenance

Easy to transport and store

- Rugged cart with fold-down handle and 75 ft (23 m) capacity hose rack is maneuverable and convenient to store
- Pail hook holds paint bucket for easy transport on job site and reduces spilling

Durable Piston Pump

- Stainless steel pump resists corrosion for long life
- Modular piston is removable for easy quick repair and replacement
- Max tip supported .017

Includes:

- 500 Series Contractor Spray Gun with 2-Finger Trigger
- 515 Uni-Tip with Uni-Tip Hand-Tight Base
- 1/4 in x 50 ft (6.3 mm x 15.2 m), 3300 psi (22.7 MPa, 227 bar) airless paint hose
- Pump Life Protectant Fluid



Modular Displacement Pump
Part# 245569

Part# 233789
UPC# 769946075632

Zip-Spray 2100 Plus

Heavy-Duty Electric Airless Sprayer

The Zip-Spray 2100 Plus is great for contractors, property owners, handymen, and remodelers with frequent spraying needs.

Industry-Proven Hardened Chrome and Stainless Steel Piston Pump

Outlasts competitive pumps by 65%.

Durable Piston Pump

- Double-Acting - pumps paint on both the up and the down stroke for consistent delivery
- Long-Lasting Packings - Ultra high molecular weight polyethylene (UHMWPE) construction
- Wiper Ring Packing - Wipes the inside of the pump clean, extending life up to 50%
- Rotating Ball Checks - Maximize component life by eliminating wear on a single surface
- Trouble free electro-mechanical pressure control for smooth spraying.
- Max tip supported .021

- Pump lower knocks off using only a hammer for easy repair and maintenance
- Reliable DC motor
- Long extension cords can be used

Includes:

- 500 Series Contractor Spray Gun with 2-Finger Trigger
- 517 Uni-Tip with Uni-Tip Hand-Tight Base
- 1/4 in x 50 ft (6.3 mm x 15.2 m), 3300 psi (22.7 MPa, 227 bar) airless paint hose
- Pump Life Protectant Fluid, Packing Seal



Part# 247485
UPC# 769946090055

Part# 247482
UPC# 769946090048

Zip-Spray 2300 Plus

Heavy-Duty Electric Airless Sprayer

The Zip-Spray 2300 Plus is perfect for professionals who spray 3-5 times a week for most painting applications.

Heavy-Duty Piston Pump

- Pump lower knocks off easily for convenient maintenance and repair
- Max tip supported .023

Electronic Pressure Control

- Trouble free electro-mechanical variable speed pressure control for smooth spraying.

Fan-Cooled DC Motor

- Run longer extension cord

Full-Flow Manifold Filter

- Filter screen comes out with the cap for less mess
- Full-flow design flushes completely and cleans up quickly
- Reduces tip clogs and improves finish

Welded Steel-Chrome Plated Cart

- Features a retractable handle

Includes

- 500 Series Contractor Gun with 2-Finger Trigger
- 517 Uni-Tip with Uni-Tip hand-tight base
- 1/4 in x 50 ft (6.3 mm x 15.2 m) 3300 psi (22.7 MPa, 227 bar) airless paint hose
- Pump Life Protectant Fluid, Packing Seal



Part# 247531
UPC# 769946090062

Zip-Spray 2700 Plus

Pro-Duty Electric Airless Sprayer

The Zip-Spray 2700 Plus is designed for professional contractors in many applications, from residential to commercial.

Heavy-Duty Piston Pump

- Pump lower knocks off easily for convenient maintenance and repair
- Max tip supported .027

Electronic Pressure Control

- Maintains consistent fan pattern for a better finish

Enclosed Design, Fan-Cooled Brushless DC Motor

- Major components are protected from dirt, dust, and overspray
- Run longer extension cord

Full-Flow Manifold Filter

- Filter screen comes out with the cap for less mess
- Full-flow design flushes completely and cleans up quickly
- Reduces tip clogs and improves finish

Welded Steel-Chrome Plated Cart

- Features a retractable handle

Includes

- 500 Series Contractor Gun with 2-Finger Trigger
- 517 Uni-Tip with Uni-Tip hand-tight base
- 1/4 in x 50 ft (6.3 mm x 15.2 m) 3300 psi (22.7 MPa, 227 bar) airless paint hose
- Pump Life Protectant Fluid, Packing Seal



Part# 247-558
UPC# 769946090147

Zip-Spray 3100 Plus

Pro-Duty Electric Airless Sprayer

The Zip-Spray 3100 Plus is designed for professional contractors in many applications, from residential to commercial including some block filler and Elastomers.

Heavy-Duty Piston Pump

- Pump lower knocks off easily for convenient maintenance and repair
- Max tip supported .031

Electronic Pressure Control

- Maintains consistent fan pattern for a better finish

Enclosed Design, Fan-Cooled Brushless DC Motor

- Major components are protected from dirt, dust, and overspray
- Run longer extension cord

Full-Flow Manifold Filter

- Filter screen comes out with the cap for less mess
- Full-flow design flushes completely and cleans up quickly
- Reduces tip clogs and improves finish

Welded Steel-Chrome Plated Cart

- Features a retractable handle

Includes

- 500 Series Contractor Gun with 2-Finger Trigger
- 517 Uni-Tip with Uni-Tip hand-tight base
- 1/4 in x 50 ft (6.3 mm x 15.2 m) 3300 psi (22.7 Mpa, 227 bar) airless paint hose
- Pump Life Protectant Fluid, Packing Seal



Part# 247-559
UPC# 769946090123

Zip-Spray 3600 G Plus

Pro-Duty Gas Mechanical Airless Sprayer Complete

The Zip-Spray 3600 G Plus is perfect for professional painting contractors who demand high output and portability where electricity is unavailable or inconvenient. Sprays architectural coatings, light block fillers and light elastomerics.

Full Flow Filter

- Cleans from the inside out
- Reduces tip clogs

Electronic Pressure Control

- Provides excellent spray pattern
- Superior spray finish

Honda power

- Highly reliable
- Portable Power

Drive System

- Heavy-duty clutch - Adjusts and aligns itself for long life
- Hardened gears - Durable and quiet operation

Heavy-Duty Chrome Over Steel Frame

- Rust resistant for long life

Heavy-Duty Pump

- Knocks off easily for convenient maintenance
- Long wearing rod
- Max tip supported .036

Drain Tube

- Safe, durable and built to last

Lift Handles

- One person loading and unloading

Includes

- 500 Series Contractor Gun with 2-Finger Trigger
- 517 Uni-Tip with Uni-Tip hand-tight base
- 1/4 in x 50 ft (6.3 mm x 15.2 m) 3300 psi (22.7 MPa, 227 bar) airless paint hose
- Pump Life Protectant Fluid, Packing Seal



Part# 247560
UPC# 769946090161

ACCESSORIES

Airless Hose

- 3300 psi (22.7 MPa, 227 bar) rating
 - Swivel couplers and spring guards on both ends
 - Can be coupled with other airless hose
- | | |
|----------------|----------------------------------|
| Part # HSE1450 | 1/4 in (6.4 mm) x 50 ft (15.2 m) |
| Part # HSE3850 | 3/8 in (9.5 mm) x 50 ft (15.2 m) |
| Part # 245449 | 1/4 in (6.4 mm) x 25 ft (7.6 m) |



Whip Hose

- Whip Hoses add flexibility and reduce operator fatigue
- | | |
|----------------|---------------------------------|
| Part # HSE3163 | 3 ft (0.9 m) x 3/16 in (4.8 mm) |
| Part # HSE3165 | 5 ft (1.5 m) x 3/16 in (4.8 mm) |



Gun Hose Kits

- 400 Series Professional Gun with Uni-Tip, Uni-Tip Hand-Tight Base, and 1/4 in (6.4 mm) x 50 ft (15.2 m) Airless Hose
- Part # 248249 (4-Finger) ("G" thread only)
- Part # 248250 (2-Finger) ("G" thread only)
- 400 Series Professional Gun with Super-Zip, Hand-Tight Base and 1/4 in (6.4 mm) x 50 ft (15.2 m) Airless Hose
- Part # 451-SHF ("F" thread), 451-SHG (4-Finger) ("G" thread)
- Part # 456-SHF ("F" thread), 456-SHG (2-Finger) ("G" thread)
- 500 Series Contractor Gun with Uni-Tip, Hand-Tight Base, and 1/4 in (6.4 mm) x 50 ft (15.2 m) Airless Hose ("G" thread only)
- Part # 256244 (4-Finger)
- Part # 256245 (2-Finger)



Hose Connectors (Wrench Tight)

Part # 4410	3/8" (npt) x 3/8" (npt)
Part # 4413	1/4" (npt) x 1/4" (npt) Hex Nipple
Part # 4414	1/4" (npt) x 3/8" (npt)
Part # 162485	3/8" M x 3/8" M Nipple

<p>THREAD SIZE ON DIFFUSER</p> <p>"F" = 11/16</p> <p>"G" = 7/8</p>

200 Series Airless Spray Gun

- Easy-access in-handle paint filter reduces tip clogging and improves finish
 - Comfortable 4-Finger Trigger
 - Includes 515 Uni-Tip
 - Ideal for small projects
 - Max working pressure 3600 psi
- | | |
|---------------|---------------------------------|
| Part # 251-U | 4-Finger Gun with Uni-Tip |
| Part # 251-SG | 4-Finger Gun with Super-Zip Tip |
- Not repairable



400 Series Professional Airless Spray Gun

- Improved! Life of the 400 Series gun before repair is equal to or better than that of competitive guns.
 - Heavy-duty swivel allows easy gun movement
 - Anodized body resists corrosion
 - Split handle for easy access to filter
 - Includes 517 Uni-Tip & Guard
 - Available with "F" and "G" diffusers to match all systems
 - Max working pressure 3600 psi (24.8 MPa, 248 bar)
- | | |
|-----------------------|---------------------------------------------|
| Part # 248240 | 2-Finger Gun with Uni-Tip ("G" thread only) |
| Part # 456-SF, 456-SG | 2-Finger Gun with Super-Zip |
| Part # 248239 | 4-Finger Gun with Uni-Tip ("G" thread only) |
| Part # 451-SF, 451-SG | 4-Finger Gun with Super-Zip |
- Repair Kit # 4427-F, 4427-G



500 Series Contractor Gun

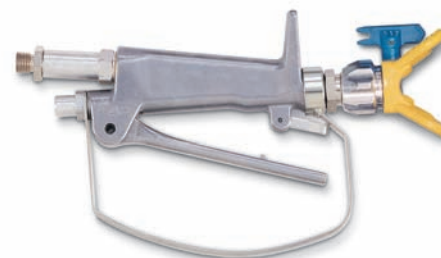
The ASM 500 Contractor Gun is new and designed for durability, spraying performance and a long life

- Lightweight
 - Long life
 - Easy trigger pull
 - Includes 517 Uni-Tip & Guard
 - Heavy-duty swivel allows easy gun movement
 - Built in filter reduces tip clogging
 - Split handle for easy filter removal
 - Available "G" thread only
 - Built in hook for hanging
 - Maximum working pressure 3600 psi (24.8 MPa, 248 bar)
- | | |
|---------------|--------------|
| Part # 289316 | 2-Finger Gun |
| Part # 288681 | 4-Finger Gun |
- Repair Kit # 243092



Combo Gun

- Well-balanced, lightweight, comfortable handle and trigger
 - In-handle gun filter and internal trigger lock
 - Add a Mini Pole or Maxi Pole for extra reach
- | | |
|-------------------------|----------------------------------------------------------------|
| Part # 248241 | with 517 Uni-Tip and Uni-Tip Hand-Tight Base ("G" thread only) |
| Part # 6700-SF, 6700-SG | with 517 Super-Zip and Super-Zip Hand-Tight Base |
- Repair Kit # 6727-F, 6727-G



Zip-Roll Pressure Roller

The Zip-Roll pressure roller accessory attaches and is feed paint from your airless pump allowing you to use your system to roll in areas where spraying is not practical. Provides smooth, continuous delivery of paint to all types of surfaces. Just trigger gun to release paint to roller. Pressure rolling is 4 times faster than standard rolling!

- Extends reach – no need for a ladder
- Chrome-plated stainless steel frame provides rust resistance and eliminates streaking
- Hand-Tight system for easy assembly – no tools required

- Convenient Zip-Clip™ holds roller cover securely on frame and quickly releases for easy cleanup
- Few parts for quicker cleaning time

Zip-Roll Pressure Roller

(Includes Combo Gun)

	3 ft	6 ft
Wrench-Tight with Flat Guard	Part # 970309(F)	Part # 970609(F)
Wrench-Tight with Flat Guard	Part # 970309(G)	Part # 970609(G)
Hand-Tight with Zip Guard	Part # 980309(F)	Part # 980609(F)
Hand-Tight with Zip Guard	Part # 980309(G)	Part # 980609(G)
Hand-Tight with Super Zip Guard	Part # 980309(SG)	Part # 980609(SG)
Hand-Tight with Super Zip Guard	Part # 980309(SF)	Part # 980609(SF)
Zip-Roll Frame only	Part # 244278	



Zip-Roll Frame Only
Part # 244278

Zip-Roll Pressure Roller

Attaches to gun that comes with units.

Includes: 45° "G" thread gun adapter, 24 in. (61 cm) extension, 9 in (23 cm) roller frame & 1/2" (13 cm) nap cover
Part # 287713



Zip-Roll Pressure Roller Covers

High-quality, all-purpose pressure roller covers. Available in a variety of naps.

Part # 7721	Smooth Surfaces – 9 in x 3/8 in (23 cm x .95 cm)
Part # 7722	Semi-Smooth Surfaces – 9 in x 1/2 in (23 cm x 1.27 cm)
Part # 7723	Medium Surfaces – 9 in x 3/4 in (23 cm x 1.90 cm)
Part # 7724	Rough Surfaces – 9 in x 1 1/4 in (23 cm x 3.18 cm)



45° Swivel Fitting

To be used between the gun and Heavy-Duty Extension for pressure rolling. ("G" to "G" thread)

Part # 239531	Fitting
Part # 166969	Gasket
Part # 114049	"O" Ring

Note: 3 parts must be ordered separately.



Mini Poles

- Durable stainless steel construction for rust resistance
- Hand-Tight system allows for easy attachment to gun, without tools
- Two or more poles can be combined for extended reach

- Available in 4 lengths and "F" and "G" thread sizes to fit all guns
- For spraying ceilings, overhangs, floors, and decks

3400 Series
With Uni-Tip Hand-Tight Base ("G" thread only)

6 in (15.2 cm)	Part # 248233
12 in (30.5 cm)	Part # 248234
18 in (45.7 cm)	Part # 248235
24 in (61.0 cm)	Part # 248236

3400 Series
Mini Pole

With Super-Zip Hand-Tight Base

6 in (15.2 cm)	Part # 3406-SF	Part # 3406-SG
12 in (30.5 cm)	Part # 3412-SF	Part # 3412-SG
18 in (45.7 cm)	Part # 3418-SF	Part # 3418-SG
24 in (61.0 cm)	Part # 3424-SF	Part # 3424-SG

With Flat Tip Base Wrench Tight

6 in (15.2 cm)	Part # 2406-F	Part # 2406-G
12 in (30.5 cm)	Part # 2412-F	Part # 2412-G
18 in (45.7 cm)	Part # 2418-F	Part # 2418-G
24 in (61.0 cm)	Part # 2424-F	Part # 2424-G



3500 Series* (with Anglehead)

With Uni-Tip Hand-Tight Base ("G" thread only)

6 in (15.2 cm)	Part # 255258
12 in (30.5 cm)	Part # 255259
18 in (45.7 cm)	Part # 255260
24 in (61.0 cm)	Part # 255261

3500 Series
Mini Pole

With Super-Zip Hand-Tight Base

6 in (15.2 cm)	Part # 3506-SF	Part # 3506-SG
12 in (30.5 cm)	Part # 3512-SF	Part # 3512-SG
18 in (45.7 cm)	Part # 3518-SF	Part # 3518-SG
24 in (61.0 cm)	Part # 3524-SF	Part # 3524-SG

With Flat Tip Base Wrench Tight

6 in (15.2 cm)	Part # 2506-F	Part # 2506-G
12 in (30.5 cm)	Part # 2512-F	Part # 2512-G
18 in (45.7 cm)	Part # 2518-F	Part # 2518-G
24 in (61.0 cm)	Part # 2524-F	Part # 2524-G



Maxi Poles

Hand-Tight Maxi Poles accept Hand-Tight adapters and an additional Maxi Pole or Mini Pole for 12 ft maximum length.

- Includes Anglehead™ to adjust spray angle
- Available in "F" and "G" thread sizes to fit all guns

With Uni-Tip Hand-Tight Base ("G" thread only)	With Super-Zip Hand-Tight Base	With Flat Tip Base	
Part # 248242 2 ft (60.9 cm)	Part # 7402-SF, 7402-SG 2 ft (60.9 cm)	Part # 7302-SF, 7302-SG 2 ft (60.9 cm)	
Part # 248243 3 ft (91.4 cm)	Part # 7403-SF, 7403-SG 3 ft (91.4 cm)	Part # 7303-SF, 7303-SG 3 ft (91.4 cm)	
Part # 248244 4 ft (121.9 cm)	Part # 7404-SF, 7404-SG 4 ft (121.9 cm)	Part # 7304-SF, 7304-SG 4 ft (121.9 cm)	
Part # 248245 6 ft (182.9 cm)	Part # 7406-SF, 7406-SG 6 ft (182.9 cm)	Part # 7306-SF, 7306-SG 6 ft (182.9 cm)	
Part # 248246 9 ft (274.2 cm)	Part # 7409-SF, 7409-SG 9 ft (274.2 cm)	Part # 7309-SF, 7309-SG 9 ft (274.2 cm)	

AngleHead™

- In-line AngleHead Swivel provides accurate spraying at any height or angle
- Swivels to 90° (shown) for easy spraying of challenging areas
- Tip not included

Part # 7506A	("F" thread) no base included
Part # 7506AG	("G" thread) no base included
Part # 248247	with Uni-Tip Hand-Tight Base ("G" thread only)
Part # 7506-SF	with Super-Zip Hand-Tight Base
Part # 7506-SG	with Super-Zip Hand-Tight Base
Part # 7551-G	Pole Gun Adapter, Hand-Tight
Part # 7551-F	Pole Gun Adapter, Hand-Tight
Part # 87500G	With Flat Tip Guard, Wrench-Tight
Part # 87500F	With Flat Tip Guard, Wrench-Tight
Part # 7556-G	Pole Gun Adapter, Wrench-Tight
Part # 7556-F	Pole Gun Adapter, Wrench-Tight



0° to 90° (90° Shown)

Maxi Pole



Gun Filters – 2-Pack

- Stainless steel mesh to eliminate rust

200 Series

Part # 248677 60 Mesh & 100 Mesh (1 ea.)

300, 400 & 500 Series

Part # 4435-2	Extra Fine 200 Mesh	Red for varnishes and lacquers
Part # 4434-2	Fine 100 Mesh	Yellow for enamels and stains
Part # 4433-2	Medium 50 Mesh	White for latex paints
Part # 4436-2	Coarse 30 Mesh	Green for heavy-bodied paints



Gun Repair Kits

- Includes Ball Valve Plunger Assembly and Diffuser
- | | |
|-----------------------|--------------------|
| Part # 243092 | 500 Gun repair kit |
| Part # 4427-F, 4427-G | 400 Series gun |
| Part # 3027-F, 3027-G | 300 Series gun |

Note: 400 Series Gun Repair Kits may be used in 300 Series Guns.



Pump Repair Kits

Part # 245078	Zip-Spray ESP
Part # 245569	Zip-Spray 1700
Part # 244194	Zip-Spray 2100 Plus
Part # 244194	Zip-Spray 2300 Plus
Part # 248212	Zip-Spray 2700, 3100, 3400G, 3600G

"F" to "G" Adapter

- Converts 11/16 in (17 mm) "F" Thread to 7/8 in (22 mm) "G" Thread
- Part # 248248



Reversible Tip Systems

From state-of-the-art features to our color-coded tip handles, we make spray tips easier to use and select. Plus, we provide the technology to give you durable, reliable equipment that delivers a consistent spray pattern for a variety of materials.

- Patented diffuser allows atomization at lower pressures, reducing tip wear and extending tip life
- Pinned handle resists twisting and breakage
- Reversible for easy cleaning
- Liquid-honed for long life and double-tested to ensure accurate spray pattern and flow rate
- Highest-quality carbide tip produces longer useable life
- Color-coded handles for easy identification

ASM's color-coded tip handle and corresponding tip selection guide make it simple to select the right orifice and fan pattern for your painting application. Follow the steps below for easy tip selection.

Spray Tip Application Guide

- 1 - Identify the surface you will be spraying
- 2 - Choose your coating
- 3 - Determine your spray pattern width
[spraying 12 in (30.5 cm) from the surface]
- 4 - Follow chart to tip number

Tip handles are color-coded by orifice (tip hole) size for easy identification on the job site.

How to Determine Spray Tip Size:

EXAMPLE:
 $\#5 = 1/2$ Fan Width or $2 \times 5 = 10$ Inch Fan

#17 Orifice is diameter of opening in thousandths

Surface	Coating	Fan Width in Inches	Grey .009	Red .011	Orange .013	Yellow .015	Blue .017	Green .019	Purple .021	Brown .023	Black .025	Black .027	Black .029	Black .031	Black .035	Black .045	Black .061	Filter Mesh Color Code	
Wood Interiors,	Lacquer, Varnish, Shellac	2"																200 Mesh	
		4"	209	211															
		6"	309	311															
		8"	409	411	413														
		10"	509	511	513														
	Alkyd Stain, Alkyd Enamel, Sanding Sealer	12"	609		613														100 Mesh
		4"		211	213														
		6"		311	313														
		8"		411	413	415													
		10"				415													
Interior Walls, Ceilings, Drywall	Latex, Vinyl, Acrylic	2"			113	115												50 Mesh	
		4"		211	213	215													
		6"			313	315													
		8"				415	417	419											
		10"				515	517	519											
		12"				615	617	619	621	623									
Roof Overhangs	Primer, Enamel, Latex, Acrylic	2"			113	115												30 Mesh	
		4"			213	215	217												
		6"				315	317	319											
		8"				415	417	419											
		10"				515	517	519											
		12"				615	617	619											
Masonry, Block, Stucco, Concrete	Vinyl, Oil Base, Alkyd	6"				415	417	419	421	423								200 Mesh	
		8"				515	517	519	521	523									
		10"							621	623									
		12"																	
		16"				615	617	619	621	623									
		18"																	
	Latex, Acrylic	8"					417	419	421	423								100 Mesh	
		10"					517	519	521	523									
		12"					617	619	621	623									
		16"																	
		18"																	
		20"																	
Smooth Elastomeric	6"											327					50 Mesh		
	8"						419	421	423	425	427	429	431	435					
	10"						519	521	523	525	527		531	535					
	12"						619	621	623	625			631	635	645	661			
	16"																		
	18"																		
Wood Exteriors, Shingle Siding, Shiplap	Exterior Stain	6"				315												200 Mesh	
		8"				415	417												
		10"				515	517	519											
	Vinyl, Acrylic, Latex	12"					617	619											
		6"					315												
		8"					415	417	419	421									
Open Joists Ceiling Areas RIB Deck Ceilings	Mil White	10"					417	419	421									100 Mesh	
		12"					517	519	521										
		16"					617	619	621										
	High Build	6"					315	317	319	321									
		8"					415	417	419	421	423	425							
		10"					515	517	519	521									
Dry Fall	12"					615	617	619	621										
	6"					315	317	319	321										
	8"					415	417	419	421	423	425								

- Red — For Varnishes and Lacquers
- Yellow — For Enamels and Stains
- White — For Latex
- Green — For Heavy-Bonded Paints

Uni-Tip™

Universal Reversible Spray Tips

- The Uni-Tip is universal with major brands, including Titan, SprayTECH, Graco RAC® IV and RAC 5 and Airlessco. Not compatible with Graco RAC X™, ASM Super-Zip or Zip-Tip.
- Best quality carbide tip means a superior spray pattern and a longer useable fan pattern life
- The color-coded handle makes it easy to identify the tip size on the job
- Each tip individually tested for consistent fan and orifice size
- One-piece Uni-Tip seal means fewer parts on hand
- Uni-Tip seal is compatible with the full range of paints and solvents
- Pinned Handle resists twisting and breakage
- Nib on handle for seal replacement
Part # 69-XXX



Striping Uni-Tip

- Specifically manufactured to provide crisp, clean edges
- Available in all common striping tip sizes
Part # 69xxxST

Fine-Finish Uni-Tip

- All the features of the Uni-Tip Plus, double orifice gives greater break-up of fine-finish materials
- Provides the finest atomization and a high-quality finish
- Up to 85% transfer efficiency
Part # 69-FFXXX

Uni-Tip Hand-Tight Base/Guard (Tip not included)

- Aluminum won't rust
- Virtually eliminates paint buildup and dripping
- Easy no-tools assembly
- Quickly change from horizontal to vertical spray pattern
Part # 248200 "G" thread is 7/8" (22 mm)
Part # 249303 "F" thread is 11/16" (17 mm)



Uni-Tip Seal

- Easily installs without tools!
Part # 248228 (5-pack)



Standard Uni-Tips (69-XXX)

Fan Width in Inches	Grey .009	Red .011	Orange .013	Yellow .015	Blue .017	Green .019	Purple .021	Brown .023	Black .025	Black .027	Black .029	Black .031	Black .035	Black .045	Black .061
2"			113	115											
4"	209	211	213	215	217	219	221								
6"	309	311	313	315	317	319	321			327					
8"	409	411	413	415	417	419	421	423	425	427	429	431	435		
10"	509	511	513	515	517	519	521	523	525	527		531	535		
12"	609		613	615	617	619	621	623	625			631	635	645	661
16"													835		

Striping Uni-Tips (69XXXST)

Fan Width in Inches	Yellow .015	Blue .017	Green .019	Purple .021	Black .027
4"	215	217			
6"	315	317	319	321	327
8"		417			
10"		517			
12"	615	617			

Fine Finish Uni-Tips (69-FFXXX)

Fan Width in Inches	Red .011	Orange .013	Yellow .015	Blue .017	Green .019
4"	211	213	215		
6"	311	313	315		
8"	411	413	415		
10"		513		517	
12"					619

Flat Tip Systems

Fine-Finish Flat Tips

Airless spraying of fine-finish materials requires greater break-up than non-fine-finish materials. With our Double Orifice Fine-Finish System, you can select a pre-orifice and a spray orifice to make a customized fine-finish tip. It is recommended that you select a spray orifice two thousandths larger than the pre-orifice.

- Pre-orifice is color-coded by orifice size
- Spray orifice is color-coded by orifice size
- Pre-orifice fits into spray orifice hand-tight without tools
- Full selection of sizes for all applications
 - Part # 96-xx-xxx (Includes pre-orifice and spray orifice)
 - Pre-orifice available in sizes .007-.019
 - Spray orifice available in sizes .009-.021, Fan Widths 2-12 in (51-305 mm)
 - Part # 96-xxx Pre-orifice, available in sizes .007-.040
 - Part # 96-xxx Spray orifice available in sizes .009-.021, Fan Widths 2-12 in (51-305 mm)



Fine-Finish Flat Tip Base/Guard

- Hand-Tight; requires no tools
- Flat Tip Bases are universal and fit all makes of guns
 - Part # 9601-F Fits "F" thread size - 11/16 in (17 mm)
 - Part # 9601-G Fits "G" thread size - 7/8 in (22 mm)

Flat Tip-n-Gasket System

- Gasket is permanently attached to flat tip
- Gaskets are color-coded for accurate tip selection
- Flat Tips are universal and fit all makes of Flat Tip Bases
 - Part # 93-xxx



Flat Tip-n-Gasket									
•	209	309	409	•	•	•	•	•	•
111	211	311	411	511	611	711	•	•	•
113	213	313	413	513	613	713	813	913	•
115	215	315	415	515	615	715	815	915	•
117	217	317	417	517	617	717	817	917	•
119	219	319	419	519	619	719	819	919	•
121	221	321	421	521	621	721	821	921	•
•	•	323	423	523	623	723	823	923	•

Standard Flat Tips

- Flat Tips are universal and fit all makes of Flat Tip Bases
 - Part # 90-xxx
- (Available in all Super-Zip sizes. See chart on page 12.)

Flat Tip Base/Guard

- Flat Tip Bases are universal and are available to fit all makes of guns
- Accommodates Flat Tip-n-Gasket (93-xxx) and Standard Flat Tips (90-xxx)
 - Part # 420-F Fits "F" thread size - 11/16 in (17 mm)
 - Part # 420-G Fits "G" thread size - 7/8 in (22 mm)
- Separate tip gasket available in tubes of eight (8)
 - Part # 401-8



Texture Application Guide

Get the Interior and Exterior Texture Finish You Want

Interior Texture

Simulated Acoustic (Popcorn)



Orange Peel, Fine Splatter



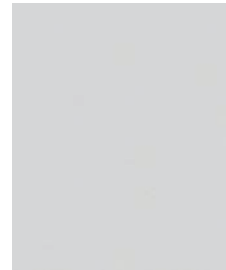
Splatter



Knockdown



Smooth, Level 5 and Skim Coat



Commonly Used Materials

- Ceiling Spray Textures Containing Polystyrene or Vermiculite Aggregate (Fine, Medium, Coarse)

- All-Purpose Joint Compounds
- Lightweight Joint Compounds
- Wall and Ceiling Spray Textures

- All-Purpose Joint Compounds
- Lightweight Joint Compounds
- Wall and Ceiling Spray Textures

- All-Purpose Joint Compounds
- Lightweight Joint Compounds
- Wall and Ceiling Spray Textures

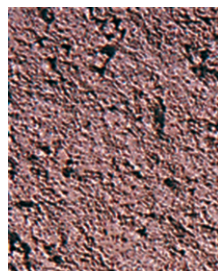
- All-Purpose Joint Compounds
- Lightweight Joint Compounds
- Wall and Ceiling Spray Textures
- Skim Coat Materials
- Wall Surfacing Materials

Exterior Texture Not suitable for stucco or EIFS materials

Textured Acrylics and Elastomers



Deck Coatings



Commonly Used Materials

- Textured Acrylic Materials
- Textured Elastomeric Materials

- Decorative and Anti-Skid Deck Coatings

Zip-Tex Spray Nozzles Part # 234153

Black 12 mm Acoustics Large Knockdown Popcorn

Beige 4 mm Fine Finish Orange Peel

White 6 mm Orange Peel Fine Spatter

Gray 8 mm Splatter Small to Med Knockdown

Texture Sprayers

ASM Zip-Tex texture units are manufactured by the worlds leading manufacturer of airless spray equipment. Our pumping systems are built rugged and are designed for large and small jobs offering a less fatiguing and better way to add texture coatings. ASM offers two texture spray systems for the contractor who is ready to graduate from the traditional hopper gun. ASM's texture units deliver a smooth material flow for uniform coverage and a consistent and professional pattern.

Interior Coatings:

- Popcorn
- Orange Peel
- Splatter
- Knockdown
- Smooth Level 5 or Skim Coat

Exterior Coatings:

- Textured Acrylics and Elastomerics
- Deck Coatings
- Not suitable for Stucco or EIFS coatings

Zip-Tex 650

Interior Texture Sprayer

The Zip-Tex 650 is the perfect pumping system for tradesmen and contractors who are ready to graduate from a hopper gun to a faster, more productive, less-fatiguing spray rig. Just add air.

Innovative Pump-Only Texture Sprayer

- Small, lightweight and portable – easy to bring on and off the job site
- weight: 25 lbs (11.3 kg)

RotoFlex II Texture Pump

- Delivers smooth material flow for uniform coverage and a consistent pattern
- Provides material flow rates up to .65 gpm for faster applications

Superior Texture Projection

- Pumping system force-feeds material through the texture gun and projects texture farther than a traditional hopper gun

Material Hopper

- Holds 5 gallons of material, allowing you to complete a whole room without stopping to refill

Includes

Unit, Gun, 6 mm and 8 mm nozzles, 20 ft material hose and viscosity ball



Part # 254982

IMPORTANT:

- Designed for use with a user-supplied air compressor minimum air compressor rating 3.5 cfm at 40 psi; .09 m³/min

Zip-Tex™ 900

Interior Texture Sprayer

The all new Zip-Tex 900 is the perfect choice for the contractor who's looking to spray high-quality texture finishes with a simple-to-use, self-contained machine.

New RotoFlex™ II Texture Pump

- Features an innovative braided sling that provides extra support to the RotoFlex pump tube for higher performance and life
- Delivers smooth material flow for uniform coverage and a consistent spray pattern

New Higher-Production Performance Points

- Max output 9 gallons per minute (Finish jobs even faster)
- Material flow increased by more than 20% over the previous model 750.
- Material pressure max 60 psi, 4.2 bar boosted by more than 10% over the 750 – handle thicker mud mixes

New Higher-Capacity On-Board Air Compressor

- Compressor Air Output: 8.7 displacement cfm; 4.0 cfm at 45 psi; 4.0 m³/min
- 20% greater air output than the 750. Projects material further
- Complete air-consuming splatter and orange peel finishes jobs faster

New Larger-Capacity Hopper

- Holds 8 gallons of material for more time spraying between refills
- Ultra-low entry height of 32 inches makes filling the hopper easier

Exclusive Dual-Use Gun

- Versatile, patent-pending design converts quickly to a hopper gun for touch-up jobs
- Easy-to-use air trigger adjustments on the gun
- New through-handle air passage prevents material from contaminating the needle spring

New Single-Motor Design

- One motor operates the pump and air compressor, making the sprayer smaller and 15 lbs (7 kg) lighter
- Delivers 1.7 hp for optimal performance

Touch-Up Hopper (included)

- Attaches to air spray gun without tools for completing quick jobs and touch-ups
- 3/4-gallon capacity

Includes

Unit, Gun, 25 ft material and air hose, touch-up hopper, 4 nozzles and viscosity ball



Part # 254983

ASM Professional Hopper Gun

Sprays acoustics, drywall mud, waterproofing material, pool deck sealant, stucco, and most gravity-fed materials. Angled 1-1/2 gallon (5.7 L) hopper allows more material capacity for longer spraying before refills!

Zip-Tex 650 Gun

Part # 288906 Gun only

Zip-Tex 750, 900 and 1000

Part # 288905 Gun only

Part # 246409 Gun including Hopper



Spray Nozzles & Replacement Parts

234153 Spray Nozzles

Beige, 4 mm — Fine Finish, Orange Peel

White, 6 mm — Orange Peel, Fine Splatter

Gray, 8 mm — Splatter, Small to Medium Knockdown

Black, 12 mm — Acoustics, Large Knockdown, Popcorn

234149 25 ft (7.6 m) Material/Air Hose (Zip-Tex 750, 900 & 1000)

288622 20 ft Material/Air Hose Kit for Zip-Tex 650

15C090 Viscosity Ball – All Machines

234156 RotoFlex Replacement Pump Hose (Zip-Tex 750 & 1000 only)

Recommended replacement after 2000-2500 gallons (7571-9463 L) of gypsum-based material

288623 RotoFlex II Replacement Pump Hose (Zip-Tex 650 & 900 only)

234159 Gun Repair Kit (All guns except 288906 Gun)

258000 Gun Repair Kit for 288906 Gun

234162 Material Hose Plug and Hopper Gun Attachment Plug

234188 Hopper Clamp

Zip-Clean™

Direct Drive Pressure Washers

Zip-Clean pressure washers offer innovative features to make your job easier, and reliable components to make you more productive. You'll spend less time on machine set-up with our one-hand hose connection and built-in chemical injector. Use Zip-Clean pressure washers for surface preparation before painting houses, decks, fences, buildings and more.

- Dependable Honda® overhead valve engines
- General™ pump with unloader, thermal relief, and over-pressure protection
- Low-profile cart for easy transport; easy to lift
- Double swivel on high pressure hose prevents tangling
- Self-siphoning chemical hose
- Features a steel powder-coated cart, built-in chemical injector, nozzle holder, and gun-hose rack

Zip-Clean 2525

Perfect for those who need a washer heavy-duty enough to get the job done, without the investment of a commercial-grade model.

- 2500 psi (172 bar) at 2.5 gpm (9.5 lpm)
- 160cc Honda GC series motor
- Radial axial pump with thermal protection
- 30 ft (9.1 m) hose (Maximum)
- Includes chemical injector and set of 3 nozzles 0°, 15° and 40°
- 1 year limited warranty



Zip-Clean 2525

2500 psi (17.2 MPa, 172 bar)
160cc Honda GC series motor
Part # 246602

Includes:

- 30 ft (9.1 m) high pressure hose
- Heavy-duty gun and wand
- 4 color-coded quick-connect spray nozzles
(3 spray nozzles, 1 chemical injection nozzle)

Zip-Clean 2730

2700 psi (18.6 MPa, 186 bar) @ 2.4 gpm (9 lpm)
 200cc Honda OHV Engine
 Part # 245348

Includes:

- 50 ft (15.2 m) high pressure non-marking hose
- Heavy-duty gun and wand
- 4 color-coded quick-connect spray nozzles (3 spray nozzles, 1 chemical injection nozzle)



Zip-Clean 3030

3000 psi (20.6 MPa, 206 bar) @ 3.0 gpm (11 lpm)
 210cc Honda OHV Engine
 Part # 245349

Includes:

- 50 ft (15.2 m) high pressure non-marking hose
- Heavy-duty gun and wand
- 4 color-coded quick-connect spray nozzles (3 spray nozzles, 1 chemical injection nozzle)



Standard Nozzles (2525)(2730)

Part # 244768 - Includes: 0°, 15°, 25°, 40°

Part # 805634 - Includes: Chemical Injector Nozzle

Part # 805535 - 0° Red

Part # 805536 - 15° Yellow

Part # 805537 - 25° Green

Part # 805538 - 40° White



Standard Nozzle (3030)

Part # 244769 - Includes: 0°, 15°, 25°, 40°

Part # 805634 - Includes: Chemical Injector Nozzle

Part # 805539 - 0° Red

Part # 805540 - 15° Yellow

Part # 805541 - 25° Green

Part # 805542 - 40° White



Rotating Nozzle

Part # 198012

Oscillating Nozzle (Not Shown)

Part # 198013

High Pressure Non-Marking Hose

3/8 in x 50 ft (10 mm x 15 m), 3000 psi (21.0 MPa, 210 bar)
 Part # 245416



Guns

Part # 244784
 Standard Gun with vented composite wand handle and quick-connect fittings, 5000 psi (344 bar, 34.4 MPa) max. working pressure

Part # 247785
 Standard Gun Only, 5000 psi (344 bar, 34.4 MPa) max. working pressure

Part # 804429
 Compensating Gun with light trigger pull, 4500 psi (310 bar, 31.0 MPa) max. working pressure

Standard Gun for use with the 2525, 2730 and the 3030



AIRLESS PRODUCT SPECIFICATIONS



Zip-Spray ESP

Part Number: 248772 (120V), 248850 (240V)
 Max Working Pressure: 2800 psi (19.3 MPa, 19.3 bar)
 Max Delivery Rating: .24 gpm (.91 lpm)
 Max Tip Size: .015
 Motor: 3/8 HP
 Max Hose Length: 150/300 ft (45.7/91.4 m) depending on tip size
 Recommended annual use of 175 gallons (662 L)
 Shipping Weight: 24 lbs (10.8 kg)
 Pump Repair Kit: 245078
Includes:

- 200 Contractor Spray Gun with 4-finger trigger
- 515 Uni-Tip with Uni-Tip Hand-Tight Base
- 1/4 in x 25 ft (6.3mm x 7.6m), 3300 psi (22.7 MPa, 227 bar) airless paint hose
- Pump Life Protectant Fluid

Warranty: 1 year warranty against defects, materials and workmanship; excluding wear parts.



Zip-Spray 1700

Part Number: 233789 (120V)
 Max Working Pressure: 3000 psi (20.7 MPa, 207 bar)
 Max Delivery Rating: .31 gpm (1.17 lpm)
 Max Tip Size: .017
 Motor: 3/4 HP
 Max Hose Length: 150/300 ft (45.7/91.4 m) depending on tip size
 Recommended annual use of 300 gallons (1135 L)
 Shipping Weight: 47 lbs (21.3 kg)
 Pump Repair Kit: 245569
Includes:

- 500 Series Contractor Spray Gun with 2-finger trigger
- 515 Uni-Tip with Uni-Tip Hand-Tight Base
- 1/4 in x 50 ft (6.3mm x 15.2m), 3300 psi (22.7 MPa, 227 bar) airless paint hose
- Pump Life Protectant Fluid

Warranty: 1 year warranty against defects, materials and workmanship; excluding wear parts.



Zip-Spray 2100 Plus

Part Number: 247485 (Cart) 247482 (Stand)
 247484 (240V Stand) 247487 (240V Cart)
 Max Tip: .021
 Max psi/bar: 3300/227
 Max gpm/lpm: .47/1.8
 Weight lbs/kg: 30/13.6 Stand
 Motor: 5/8 HP DC
 Generator Requirements: 3000W
Includes:

- 500 Contractor Airless Gun
- Hose: 1/4" x 50' (6.4mm x 15m) 3300 psi (227 bar)
- Tip: 517 Uni-Tip and Base
- Pump Life Protectant Fluid

Pump Filter: Includes Easy Out Pump Filter

Easy Out Filter Screens:

- 60 Mesh - 245527
- 100 Mesh - 245528
- 200 Mesh - 245526

Sprayer Dimensions:

- Cart - NA
- Stand - NA

Repair Parts:

- Inlet Strainer - 276897
- Packing Kit - 244194
- Rod - 249125
- Cylinder - 243176

Complete Pump Lower:

- Part # 255475

Manuals:

- Operation - 312360
- Repair - 312361
- Pump - 312362
- Gun - 312363

Warranty: 2 year warranty against defects, materials and workmanship; excluding wear parts.



Zip-Spray 2300 Plus

Part Number: 247531 247533 (240V)
 Max Tip: .023
 Max psi/bar: 3300/227
 Max gpm/lpm: .54/2.0
 Weight lbs/kg: 42/19 Cart
 Motor: 7/8 HP
 Generator Requirements: 3000W
Includes:

- 500 Contractor Airless Gun
- Hose: 1/4" x 50' (6.4mm x 15m) 3300 psi (227 bar)
- Tip: Uni-Tip 517
- Pump Life Protectant Fluid

Pump Filter: Includes Easy Out Pump Filter

Easy Out Filter Screens:

- 60 Mesh - 245527
- 100 Mesh - 245528
- 200 Mesh - 245526

Sprayer Dimensions:

- Cart-

Repair Parts:

- Inlet Strainer - 276897
- Packing Kit - 244194
- Rod - 249125
- Cylinder - 243176

Complete Pump Lower:

- Part # 255475

Manuals:

- Operation - 312360
- Repair - 312361
- Pump - 312362
- Gun - 312363

Warranty: 2 year warranty against defects, materials and workmanship; excluding wear parts.



Zip-Spray 2700 Plus

Part Number: 247558 247565 (240V)
 Max Tip: .027
 Max psi/bar: 3300/227
 Max gpm/lpm: .86/3.3
 Weight lbs/kg: 93/42 Cart
 Motor: 1.75 HP Brushless
 Generator Requirements: 5000W
Includes:

- 500 Contractor Airless Gun
- Hose: 1/4" x 50' (6.4mm x 15m) 3300 psi (227 bar)
- Tip: Uni-Tip 517
- Pump Life Protectant Fluid

Pump Filter: Includes Easy Out Pump Filter

Easy Out Filter Screens:

- 30 Mesh- 244071
- 60 Mesh- 244067
- 100 Mesh- 244068
- 200 Mesh- 244069

Sprayer Dimensions:

- Cart- 36"x26"x30"

Repair Parts:

- Inlet Strainer - 112604
- Packing Kit- 248212
- Rod- 248206
- Sleeve- 248209

Complete Pump Lower:

- Part # 248204

Manuals:

- Operation- 312538
- Repair- 312537
- Pump- 310643
- Gun- 312363

Warranty: 2 year warranty against defects, materials and workmanship; excluding wear parts.



Zip-Spray 3100 Plus

Part Number: 247559
 Max Tip: .031
 Max psi/bar: 3300/227
 Max gpm/lpm: 1.1/4.2
 Weight lbs/kg: 93/42 Cart
 Motor: 2.0 HP Brushless
 Generator Requirements: 5000W
Includes:

- 500 Contractor Airless Gun
- Hose: 1/4" x 50' (6.4mm x 15m) 3300 psi (227 bar)
- Tip: Uni-Tip 517
- Pump Life Protectant Fluid

Pump Filter: Includes Easy Out Pump Filter

Easy Out Filter Screens:

- 30 Mesh- 244071
- 60 Mesh- 244067
- 100 Mesh- 244068
- 200 Mesh- 244069

Sprayer Dimensions:

- Cart- 36"x26"x30"

Repair Parts:

- Inlet Strainer - 112604
- Packing Kit- 248212
- Rod- 248206
- Sleeve- 248209

Complete Pump Lower:

- Part # 248204

Manuals:

- Operation- 312538
- Repair- 312537
- Pump- 310643
- Gun- 312363

Warranty: 2 year warranty against defects, materials and workmanship; excluding wear parts.





Zip-Spray 3600 G Plus

Part Number: 247560
 Max Tip: .036
 Max psi/bar: 3300/227
 Max gpm/lpm: 1.25/4.7
 Weight lbs/kg: 109/50
Gun Support:
 (1) Gun with .036
 (2) Guns with .023
 (3) Guns with .018
Includes:
 • Contractor Airless Gun
 • Hose: 1/4" x 50' (6.4mm x 15m)
 BlueMax II 3300 psi (227 bar)
 • Tip: Uni-Tip 517
 • Pump Life Protectant Fluid
Pump Filter:
 • Includes Easy-Out Pump Filter
Easy-Out Filter Screens:
 • 30 Mesh - 246425
 • 60 Mesh - 246384
 • 100 Mesh - 246382
 • 200 Mesh - 246383
Sprayer Dimensions:
 • 32 (81) x 22.25 (56.5) x 31.5 (80)
Repair Parts:
 • Inlet Strainer - 189920
 • Packing Kit - 248212
 • Chromex Rod - 248206
 • Cylinder - 287551
 • Sleeve - 248209
 • Piston Valve - 239937
 • Intake Valve Kit - 246429
 • 30/55 Gallon Siphon Kit - 287541
Complete Pump Lower:
 • Part # 287512
Manuals:
 • Instruction - 312576
 • Repair - 312586
Warranty: 2 year warranty against defects, materials and workmanship; excluding wear parts.



Zip-Tex 650

Part Number: 254982
 Sprayer, Trigger Gun, 20 ft Hose
 Max Tip: NA
 Max Working psi/bar: 50/3.5
 Max gpm/lpm: .65/2.5
 Weight lbs/kg: 25/11.3
 Max Hose: 20 ft (6 m)
Motor: 1.0 HP
Tips/Discs Supplied with Trigger Gun: 6 mm, 8 mm
Compressor Air Output:
 • User supplied air compressor required
 • Minimum air compressor rating 3.5 cfm @ 40 psi
 • (.09 m³/min)
Dimensions:
 • 12" W x 20" L x 20" H (in)
 • 30" W x 51" L x 51" H (cm)
Manuals:
 • Operation- 311766
 • Repair- 311774
Materials Sprayed:
 • Simulated acoustic and drywall mud
Typical Applications:
 • Residential and light commercial interiors
Warranty: 1 year warranty against defects, materials and workmanship; excluding wear parts.



Zip-Tex 900

Part Number: 254983
 Sprayer, Trigger Gun, 25 ft Hose
 Max Tip: NA
 Max Working psi/bar: 60/4.2
 Max gpm/lpm: .65/2.5
 Weight lbs/kg: 60/27.2
 Max Hose: 25 ft (6 m)
Motor: 1.7 HP
Tips/Discs Supplied with Trigger Gun: 4 mm, 6 mm, 8 mm, 12 mm
Compressor Air Output:
 • 8.7 Displacement cfm - (sm.ltrs)
 • 4.0 cfm @ 45 psi
 • (.1 m³/min)
Dimensions:
 • 18" W x 23" L x 41" H (in)
 • 46" W x 58" L x 100" H (cm)
Manuals:
 • Operation- 311766
 • Repair- 311774
Materials Sprayed:
 • Simulated acoustic and drywall mud
Typical Applications:
 • Residential and light commercial interiors
Warranty: 1 year warranty against defects, materials and workmanship; excluding wear parts.



Zip-Clean 2525 Direct-Drive

Part Number: 246602
 Operating Pressure: 2500 psi (172 bar, 17.2 MPa)
Engine (4 cycle, air-cooled):
 160cc Honda GC Series
Fuel Tank Capacity: 1.8 qt (1.8 liter)
Water Pump Flow Rate: 2.5 gpm (9.5 lpm)
Pump Type: Radial Axial Pump
Weight: 70 lb (32 kg)
Dimensions (WxLxH): 22 x 23.5 x 34 in (56 x 60 x 86 cm)
Tips:
 • 0° Red - 805535
 • 15° Yellow - 805536
 • 25 Green - 805537
 • 40° White - 805538
 • Black Chemical Injector - 805634
 • Set of 4 Tips (0°, 15°, 25°, 40°) - 244768
Instruction Manual: 309829
Warranty: 1 year warranty against defects, materials and workmanship; excluding wear parts.



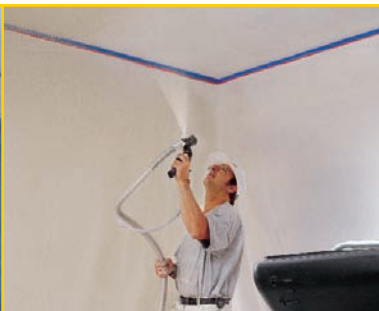
Zip-Clean 2730 Direct-Drive

Part Number: 245348
 Operating Pressure: 2700 psi (186 bar, 18.6 MPa)
Engine (4 cycle, air-cooled):
 200cc Honda OHV
Fuel Tank Capacity: 3.8 qt (3.6 liter)
Water Pump Flow Rate: 2.7 gpm (10.2 lpm)
Pump Type: General Pump, Triplex Piston Ceramic Plunger
Weight: 99 lb (45 kg)
Dimensions (WxLxH): 21.5 x 35.5 x 34 in (55 x 90 x 86 cm)
Tips:
 • 0° Red - 805535
 • 15° Yellow - 805536
 • 25° Green - 805537
 • 40° White - 805538
 • Black Chemical Injector - 805634
 • Set of 4 Tips (0°, 15°, 25°, 40°) - 244768
Instruction Manual: 309424
Repair Manual: 309425
Warranty: 2 year warranty against defects, materials and workmanship; excluding wear parts.



Zip-Clean 3030 Direct-Drive

Part Number: 245349
 Operating Pressure: 3000 psi (206 bar, 20.6 MPa)
Engine (4 cycle, air-cooled):
 270cc Honda OHV
Fuel Tank Capacity: 6.2 qt (6.1 liter)
Water Pump Flow Rate: 3.0 gpm (11 lpm)
Pump Type: General Pump, Triplex Piston Ceramic Plunger
Weight: 135 lb (61 kg)
Dimensions (WxLxH): 21.5 x 35.5 x 34 in (55 x 90 x 86 cm)
Tips:
 • 0° Red - 805539
 • 15° Yellow - 805540
 • 25° Green - 805541
 • 40° White - 805542
 • Black Chemical Injector - 805634
 • Set of 4 Tips (0°, 15°, 25°, 40°) - 244769
Instruction Manual: 309424
Repair Manual: 309425
Warranty: 2 year warranty against defects, materials and workmanship; excluding wear parts.



Fluids

ASM fluids and protectants keep your equipment in top performing condition. ASM fluids are approved for use in all airless pumps.

Pump Life™

- Concentrate protects the pump and related equipment from corrosion and rust
 - Keeps foreign material in suspension, ready to rinse out when cleaning sprayer
- Part # 245423 (32 oz, 946 ml; Available in multiples of 12)

Pump Defender™

- Specially formulated to protect airless pumps during long-term storage, freeze protection to -30° F (-34° C)
 - Eliminates damage due to corrosion
 - Lubricates and cleans to help stop sticking valve seats
- Part # 245424 (32 oz, 946 ml; Available in multiples of 12)



Packing Seal

- Prevents coating material from adhering to the pump's piston rod
 - Prolongs pump packing life in all brands of piston pumps
- Part # 245427 (8 oz, 237 ml; Available in multiples of 12)
Part # 245428 (32 oz, 946 ml; Available in multiples of 12)

Hydraulic Fluid

- Non-foaming formula
 - Resists emulsifying and chemical breakdown
- Part # 245425 (32 oz, 946 ml; Available in multiples of 12)
Part # 245426 (1 gal, 3.8 L; Available in multiples of 4)

Gun Lube

- For lubrication and protection
 - Contains no silicone and is not petroleum-based
- Part # 245429 (2 oz, 56.7 g; Available in multiples of 24)

Pressure Washer Pump Oil

- Formulated premium pump oil for most pressure washers
 - Includes anti-wear oxidizer and rust inhibitor additives
- Part # 245431 (32 oz, 946 ml; Available in multiples of 12)



Visit your local Dealer for ASM Accessories located in these merchandise racks.

**Revolving Locking Tower
Floor Merchandiser**



Requires 4 Square feet
24" Wide x 24" Deep x 91" High.

**Wall or Counter Locking
Merchandiser**



13" Wide x 7" Deep x 26" or 30" High
without header.

For more information contact ASM Customer Service at 1-800-854-4025

ASM CUSTOMER SERVICE

20500 David Koch Ave.
Rogers, MN 55374
Phone: 800-854-4025
Fax: 800-228-5104

**VISIT US ON THE WEB FOR PROMOTIONS,
PRODUCT UPDATES, MANUALS, DEALERS,
SERVICE CENTERS AND GENERAL
INFORMATION**

WARRANTY

ASM warrants its products to be free of defects in material and workmanship for one year (See operation manual for complete warranty information)

ASM AUTHORIZED SERVICE AGENCIES

See listing in Operation Manual or call 1-800-854-4025 for the nearest ASM Authorized Service Agency.

www.asmcompany.com



A DIVISION OF GRACO®